

# TECHNICAL GUIDE



Partner Principal Institucional



Partner Institucional



Media Partner



Partner Técnico



Partner



Hotel Oficial



Partner Nutrición Deportiva



Naviera Oficial



Vehículos Oficiales



Servicio Médico Oficial



Federaciones Colaboradoras





# A challenge in every landscape.

**tenerife!**  
awakens emotions.



Find your route in  
[webtenerife.co.uk](http://webtenerife.co.uk)

© Visit\_tenerife  VisitTenerife  Visit\_Tenerife



BIOSPHERE  
certified destination



# WELCOME

The Giro arrives in Tenerife! Yes, it's a reality, and you are going to be part of this unique experience. On the 19th and 20th of November we are waiting for you to give you a warm welcome at the first edition of the Giro d'Italia Ride Like A Pro Spain, a new cyclotourist route that will open the doors to an amazing place.

The goal is clear: to have a good time in a unique environment and enjoy two days in which each participant will feel like the professional riders who take part in the corsa rosa every year.

Ahead: two attractive and demanding stages for two-wheel fans.

The first one, in Adeje, will be 110 km and 3,036 metres of D+, while the second will be 64 km and 1,300 metres of D+, with a round trip in Arona.

All of this with the presence of great cycling figures such as Stefano Garzelli and Juanpe López, with whom you will be able to ride and chat during the route. Don't forget the prestigious Senza Fine trophy of the Giro d'Italia, which will also join you in the adventure!

Last but not least, we invite you to the unique Pasta Party that we will serve at your disposal, with a clear transalpine gastronomic influence, as well as the great party that will close a spectacular weekend in the inaugural edition of the Giro d'Italia Ride Like A Pro Spain.



GIRORIDELIKEAPROSPAIN.COM

tenerife! awakens emotions



MARCA

PISSEI

BKOOL



mynd ADEJE

VICTORY ENDURANCE

ARMAS

Trasmediterránea

OK mobility

hospiten

REAL FEDERACION ESPAÑOLA CICLISMO

Asociación Española de Ciclismo



**Italy**  
is simply  
extraordinary:



#beit madeinitaly.gov.it



Ministry of Foreign Affairs  
and International Cooperation

**ITA**<sup>®</sup>  
ITALIAN TRADE AGENCY

## PICK UP THE BIB

### TO COLLECT YOUR BIB YOU WILL NEED:

1. Valid DNI, NIE or Passport.
2. UCI-approved competition cycling or cycle touring licence (in case of being a member of a federation and not having subscribed to organisation's insurance).

### PICK UP THE BIB OF OTHERS:

If you are unable to pick up your bib number, another participant may pick it up presenting a signed authorisation, in addition to all the documentation specified.

### Important!

The bib is personal and non-transferable. Only you will be able to participate with it. Any fraudulent use of the bib will be a serious offence that will exclude the participant from the race for life.

### BIB COLLECTION TIMETABLE

The collection of bibs will take place on the 18th of November from 15:00 to 21:00.

In case of NOT being able to attend the bib pick up it will be necessary to send an email to [hello@giroridelikeaprospain.com](mailto:hello@giroridelikeaprospain.com)

### PLACE OF COLLECTION

HOTEL MYND ADEJE - C. el Jable, 36, 38678 Callao Salvaje, Santa Cruz de Tenerife.



### INCIDENTS

Any modification or change of insurance from day to federated (and vice versa), etc. you can do so at the incident desk before picking up your race bib.





# MYND HOTELS APUESTA POR UNA VIDA SALUDABLE Y APOYA EL DEPORTE

**mynd**  
HOTELS

Hotel y sede  
oficial del



[www.myndhotels.com](http://www.myndhotels.com)

## PARTICIPANT IDENTIFICATION

There are **two mandatory identifiers** for all participants, which will be handed out when you pick up your race bib:

- **Bracelet:** This is linked to the numbered badge on your bike and gives access to the feeding zones, Pasta Party and other services.
- **Numbered badge for your bike:** it identifies your bike. It must be placed on the front of the bike (handlebars), unbent, facing forwards. This plate must be identifiable for the organisation and volunteers.

### Important!

In the back of the plate there will be attached the control device (chip). Without the numbered plaque your time cannot be controlled, so no finisher medal will be awarded and it will not be registered for future editions.

If you are going to be present at both races (19th and 20th November) you must use the same badge and wristband for both races. Your badge number will be the same for both routes.

## OFFICIAL EQUIPMENT

When you pick up your race bib, you will receive the official jersey of the **GRAN FONDO GIRO D'ITALIA RIDE LIKE A PRO** jersey in the size you selected when you registered.







PERFORMANCE WITH STYLE

---



#corricolcuore



[www.pissei.com](http://www.pissei.com)



## OFFICIAL DEPARTURES

### • **STAGE 1 \_ ADEJE** 19 November 2022 at 08:00 hours.

Departure at Parking Jardines del Duque - <https://goo.gl/maps/e7aHy4oyv5xTwHrw9>

Arrival at Parking Jardines del Duque - <https://goo.gl/maps/e7aHy4oyv5xTwHrw9>



### • **STAGE 2 \_ ARONA** 20 November 2022 at 09:00 hours.

Departure at Calle la Caleta - <https://goo.gl/maps/uAmMggowUsE7WtXE6>

Arrival at Calle Portazgo with Av. Chayofita - <https://goo.gl/maps/6DMCXDJ7J5ALbBuK7>



## PARKING

The organisation does not have a car park but recommends parking in the areas around the stages.

**Stage 1:** Zone Jardines del Duques | **Stage 2:** Nearby Avenida Chayofita

It is advisable to arrive at the start area well in advance.

## FEEDING ZONE

The refreshment stations at our race offer a wide variety of food and drink from Victory Endurance to help you recover your strength to face the race.



### Feeding Zone STAGE 1 - ADEJE

- 36,8 Km – Solid and liquid
- 58 Km – Solid and liquid
- 73 Km – Liquid

### Feeding Zone STAGE 2 - ARONA

- 22 Km – Solid and liquid
- 43 Km – Solid and liquid

## MECHANICAL ASSISTANCE

The organisation will have assistance vehicles that will accompany the riders during both stages, as well as providing an assistance service at each start from two hours before the official start in order to resolve unforeseen events, basic breakdowns or specific needs of the cyclists.





Patrocinador oficial  
en nutrición deportiva

JOE WEIDER

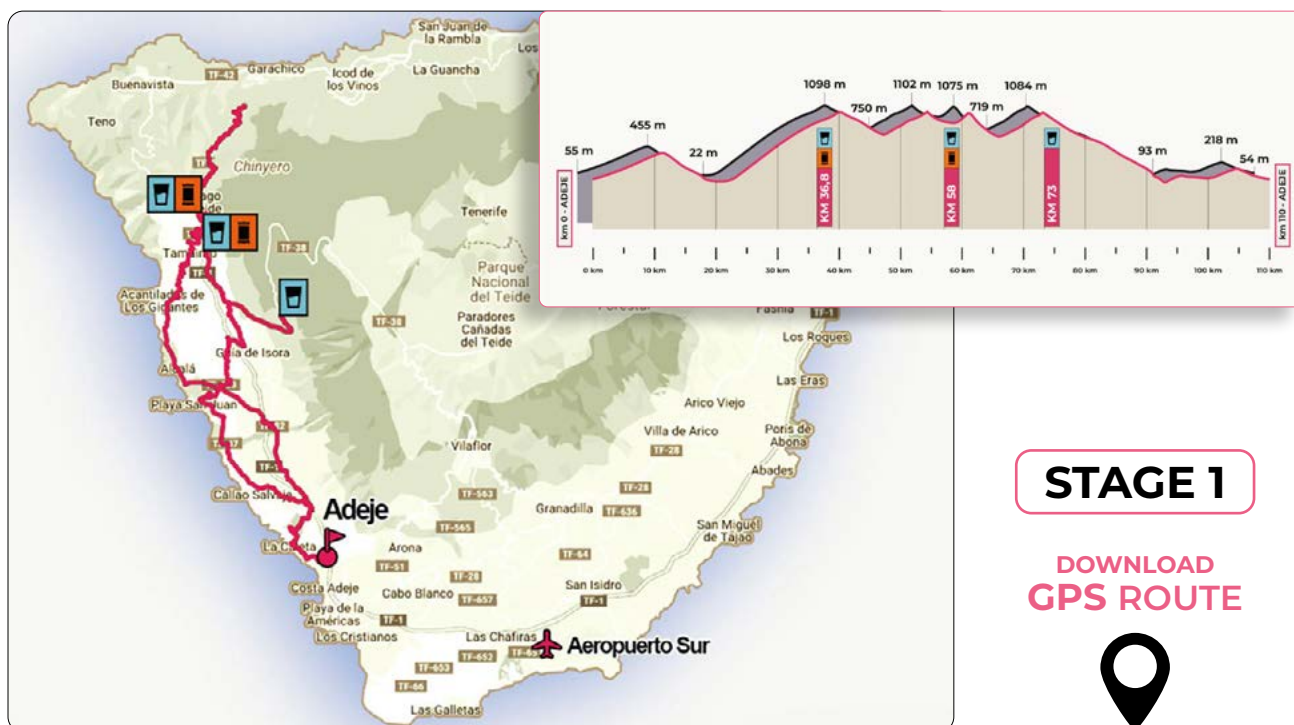
**VICTORY**  
**ENDURANCE**



OFFICIAL PARTNER



# MAP / ROUTE

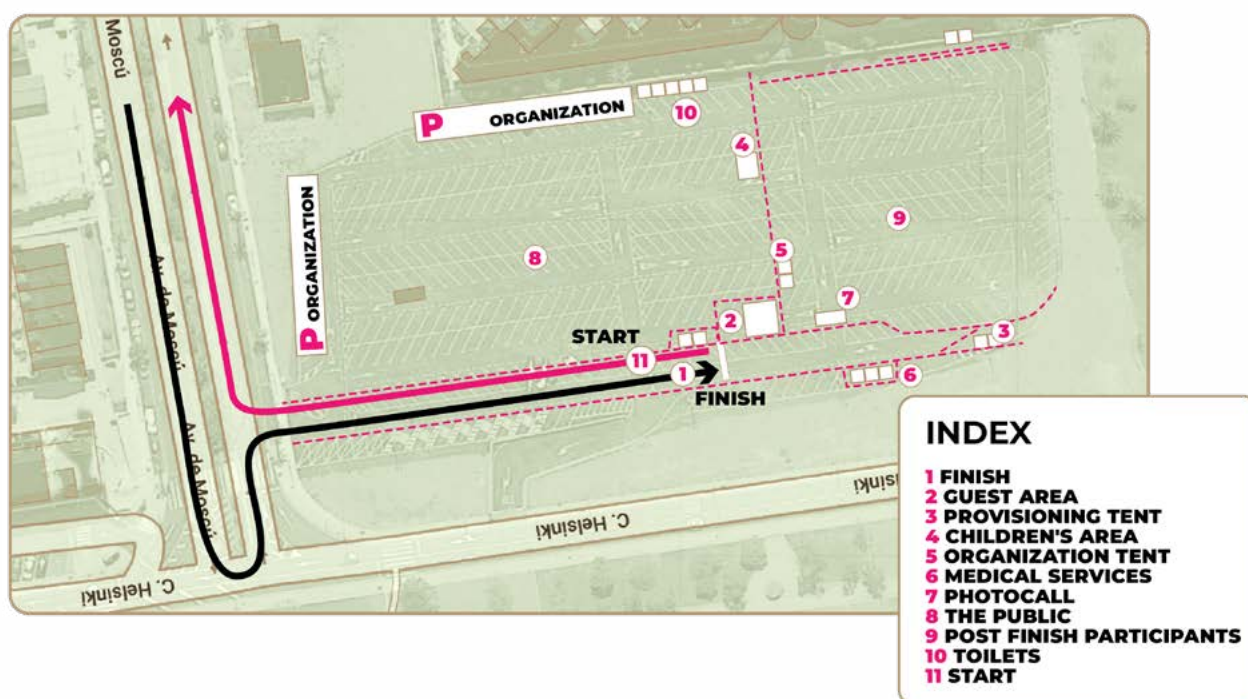


**STAGE 1**

DOWNLOAD  
GPS ROUTE



## STAGE 1 | PLACE RIDE LIKE A PRO



GIORIDELIKEAPROSPAIN.COM





# Discover Tenerife to awaken emotions you've never experienced before

Follow us!

 visit\_tenerife

 VisitTenerife

 visit\_tenerife

#visittenerife





# MAP / ROUTE

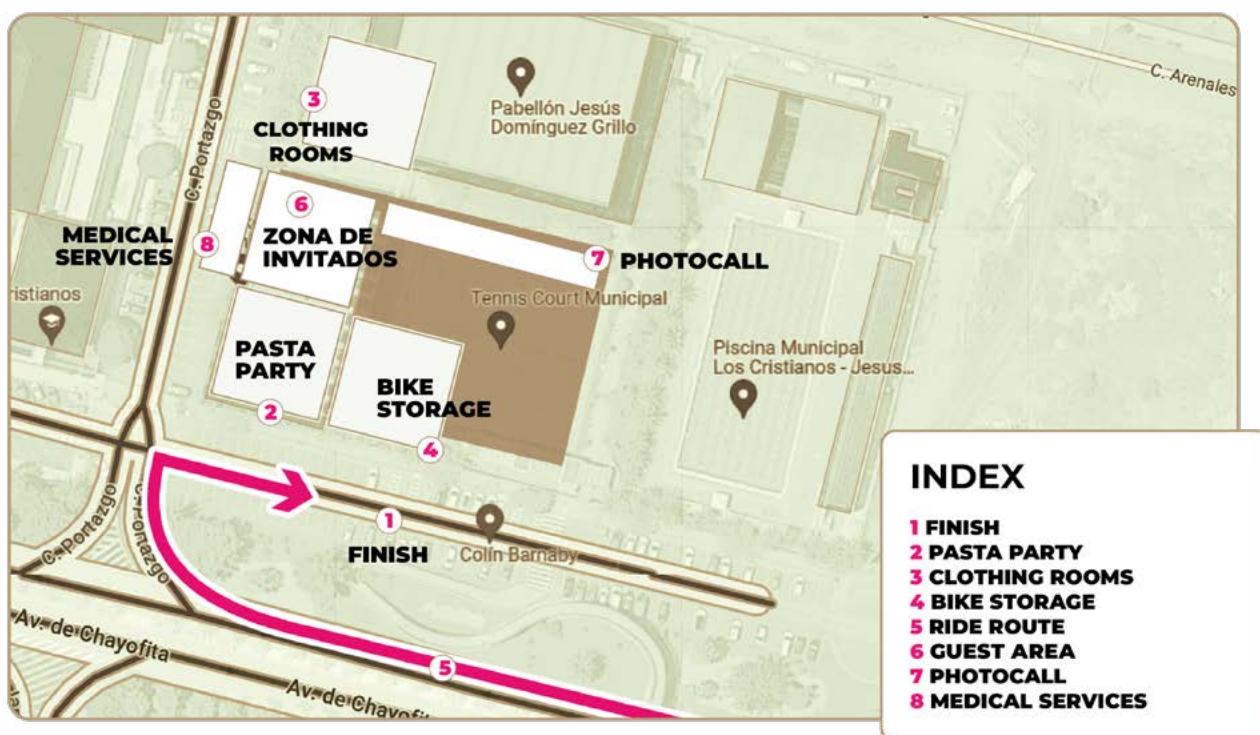


## STAGE 2

DOWNLOAD  
GPS ROUTE



## STAGE 2 | PLACE RIDE LIKE A PRO



### INDEX

- 1 FINISH**
- 2 PASTA PARTY**
- 3 CLOTHING ROOMS**
- 4 BIKE STORAGE**
- 5 RIDE ROUTE**
- 6 GUEST AREA**
- 7 PHOTOCALL**
- 8 MEDICAL SERVICES**



# okmobility

#memuevoconOK

Tu vehículo de alquiler **OK** en España, Italia, Portugal, Alemania, Grecia, Malta, Croacia, Serbia, Montenegro y ahora también en Miami **NEW!**

**-15%**  
en alquiler

PROMOCODE:  
GIROLIKEAPRO

**NEW!**

Ahora también motos



RESERVA AHORA



[okmobility.com](https://okmobility.com)

Mejor precio garantizado  
Vehículos exclusivos



## TIMED ZONES

**STAGE 1** - Km 70 a Km 76

**STAGE 2** - Km 30 a Km 38

## How to time it?

Pay attention to the segment marked in STRAVA and at the end we will tell you the fastest riders.

## CONTROL CLOSURES

There are a strict criteria for control closures. If a participant is overtaken by the broom bus, he must hand over his bib and numbered badge with the control device and make use of the broom bus (The rider shall collect his badge at the finish line of the stage).

## DROPOUTS

Any participant who does not comply with these timetables is obliged to abandon the race. If he/she wants to continue, it will be at his/her own risk and as a normal user of public roads, and as long as the State Security Forces and Corps allow it for security reasons. In this case, they will have the right to remove the badge from your bicycle. The rider shall collect his badge at the finish line of the stage.

If you decide to abandon the race, you can wait for the broom bus. They will pick you and your and your bike. Once they have completed the course, they will drop you off at the start/finish.

## FINISHER MEDALS

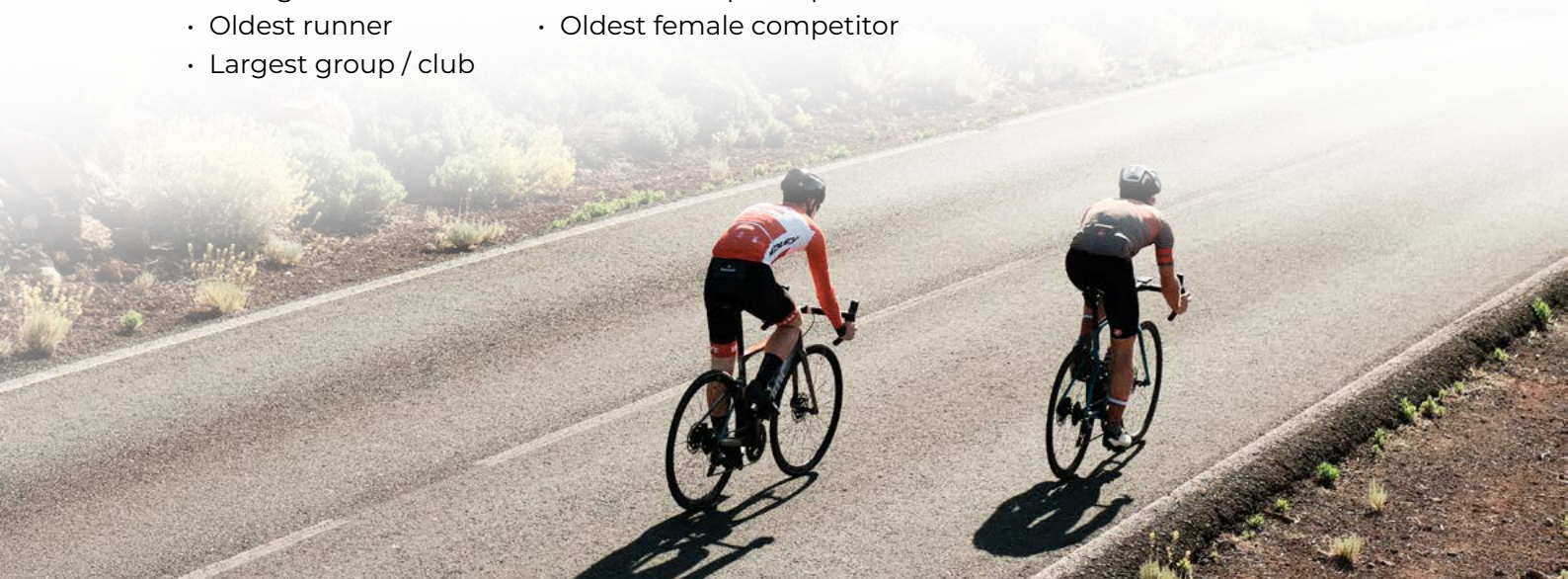
The medal will be given at the finish on our photocall podium and before accessing the Pasta Party. To collect your medal, you must present your participant wristband.

## Important!

Medals will not be delivered by post. They will be awarded at the end of each stage, to the finishers of the first, second, and the finishers of both stages.

## AWARDS

- Farthest rider
- Youngest runner
- Oldest runner
- Largest group / club
- Fastest timed sections (male and female)
- Oldest male participant
- Oldest female competitor







**CANARIAS,  
EL MEJOR DESTINO,  
PARA HACER CICLISMO**  
Conócelo con Naviera Armas  
Trasmediterránea.



CONEXIONES INTERINSULARES // **CONECTAMOS LAS 8 ISLAS**

GRAN CANARIA · LANZAROTE · FUERTEVENTURA · LA GRACIOSA · TENERIFE · LA GOMERA · LA PALMA · EL HIERRO

CONEXIONES DESDE PENINSULA // **CADIZ > CANARIAS · HUELVA > CANARIAS**



navieraarmas.com | (+34) 902 456 500 | 928 300 600

trasmediterranea.com | (+34) 902 45 46 45 | 91 736 99 57





## SERVICIOS DE LA PRUEBA



## PUNISHABLE BEHAVIOUR

- Littering the route.
- Not respecting the highway code.
- Not respecting the instructions of the Guardia Civil and/or police.
- Not going through the start controls.
- Having your own support vehicle, hindering the progress of the rest.
- Behaviour that impedes the normal development of the race.
- Not complying with the regulations.
- Fraudulent use of race bibs.
- Showing a competitive attitude that puts the other participants at risk.

## PENALTIES

- Disqualification from the race, without the right to a medal.
- Inclusion in the list of sanctioned participants.
- Prohibition to participate in future editions.
- Sanctions imposed by the authorities.

## CONTACT AND SOCIAL MEDIA



[GIRORIDELIKEAPROSPAIN.COM](http://GIRORIDELIKEAPROSPAIN.COM)



**Press**

[press@girorideliikeaprospain.com](mailto:press@girorideliikeaprospain.com)



**Contact**

[hello@girorideliikeaprospain.com](mailto:hello@girorideliikeaprospain.com)



**Emergency Phone**

+34 636 306 836

### IMPORTANT :

Keep the identification bracelet during the race and the rest of the activities for identification.



[GIRORIDELIKEAPROSPAIN.COM](http://GIRORIDELIKEAPROSPAIN.COM)





**BKOOL**

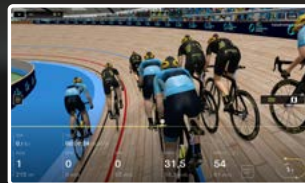


# El simulador de ciclismo virtual más realista

La experiencia más completa, con **BKOOL**



Rutas  
ilimitadas



Ciclismo  
en Pista



Workouts



Clases  
de Fitness

**¡PRUEBA 30 DÍAS GRATIS!**

[BKOOOL.COM](https://www.bkool.com)

Download on the  
App Store

GET IT ON  
Google Play



**Giro d'Italia  
virtual**

enel

hosted by  BKOOOL

Disponible para Windows, Mac, iPad & Android

Disponible en exclusiva



# LA FAST CON EL GIRO



Entidad Agrícola Decana de Canarias



